



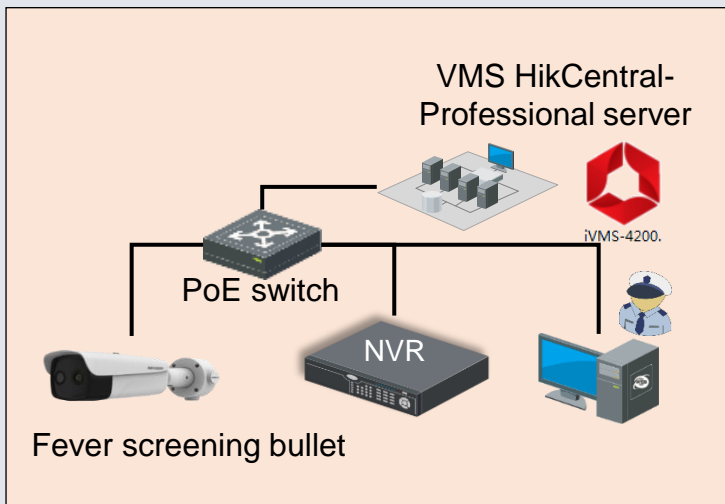
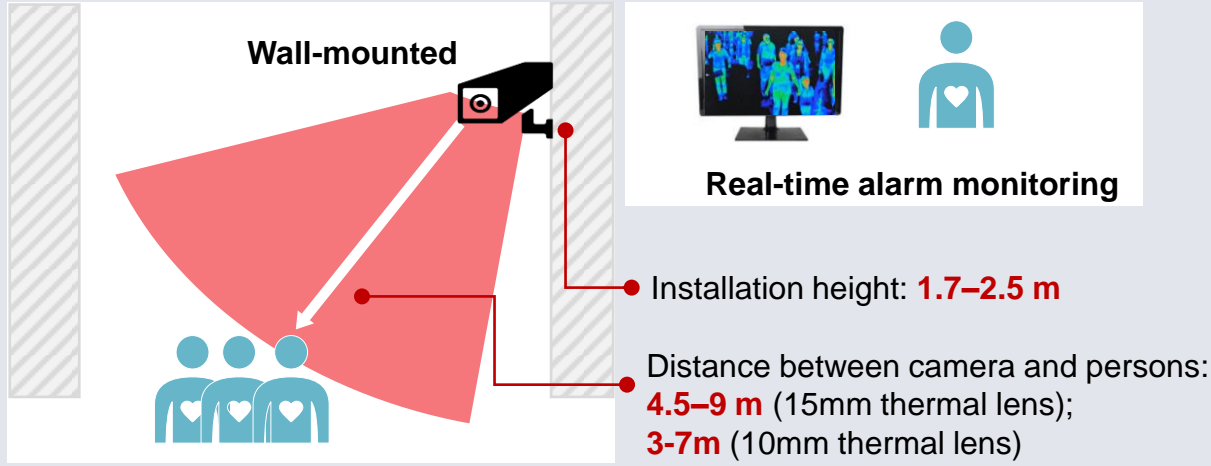
Recommended Fever Screening Solutions

1

Fixed Long-range Fever Screening

Covering wide open areas

Solution Details



Product Information

- Thermal: 384 × 288, lens: 10/15 mm
- Optical: 2688 × 1520, lens: 4/6 mm
- Simultaneous fever screening for **multiple persons (up to 30 persons)**
- **Accuracy: ±0.5°C**
- Measurement range: 30-45°C
- Working temperature: 10-35°C
- **AI human body detection** reduce the false alarms of fever screening
- Higher resolution, **more image detail**, longer measurement range



DS-2TD2636B-15/P
DS-2TD2637B-10/P



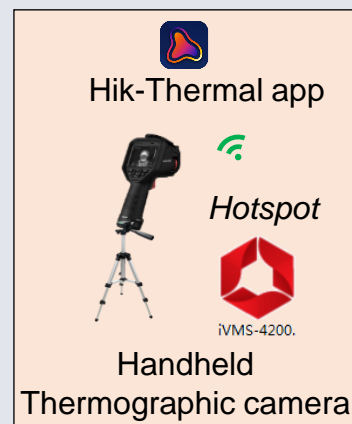
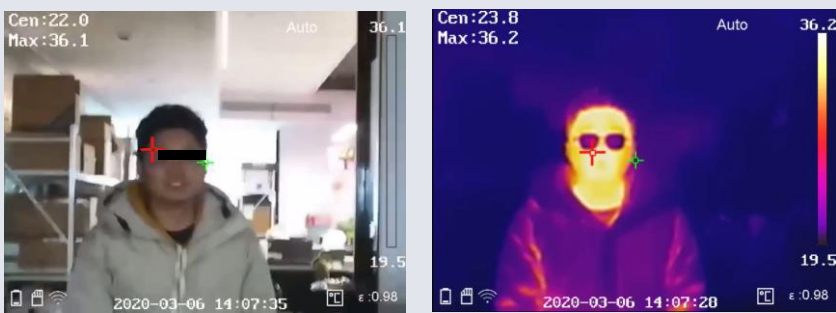
2

Handheld Patrolling Fever Screening

Covering small spaces & places not convenient to set up fixed device

Solution Details

- For preliminary fever screening by spot-checking inspectors (**indoor**)
- Fever screening without disturbing people



Product Information

- Thermal resolution: 160 × 120;
- Optical resolution: Max 8 MP;
- **Accuracy: ±0.5°C**
- Measurement range: 30-45°C
- 3.5" LCD touch screen
- Supports **Wi-Fi hotspot**, automatic screenshots of a person with a fever & uploading to the Mobile Client (Hik-Thermal) as evidence
- Supports real-time **audio alarm**



DS-2TP21B-6AVF



Application Scenarios

Hospital



The **nurse station or information desk** is the place where the potential patients will consult and gather. So the fast preliminary fever screening is quite needed here.

Airport Transport Station



The **passenger channels** at the airport or other transport stations are the important locations where passengers arrive and need the fast preliminary fever screening.

School



Corridors of schools are the regular areas where most of the students pass through. This location can be a daily internal screening point.

See far, go further